

Bimetallic Thermometers

Model A

Bimetallic Thermometers

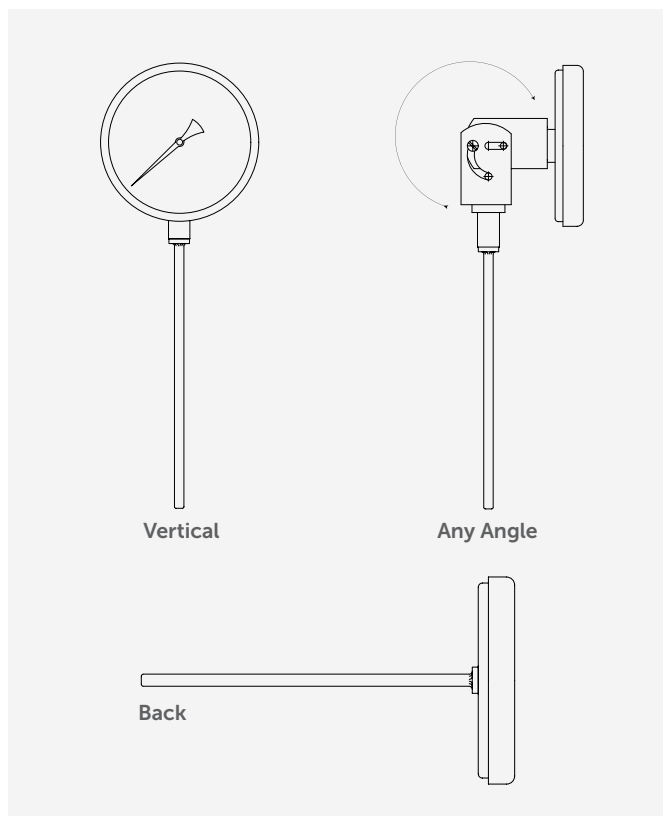


Model A	EN 13190
Case Material	316 Stainless Steel
Window	Standard Instrument Glass
IP Rating	IP66
Sheath Material	316 Stainless Steel
Stem Ø	6mm, 6.4mm, 8mm, 9.6mm
Maximum Stem Length	1000mm
Accuracy	1%
Compression Fitting	1/2" BSPP / BSPT / NPT
Dial Sizes	100mm Ø Dial, 160mm Ø Dial

The H&B Model A bimetallic thermometers feature a 316 stainless steel case and stem and have an IP66 rating. Standard dial sizes are 100mm diameter or 160mm diameter. Standard temperature ranges and stem lengths are detailed in the specifications below.

Features

- Optional ATEX approved **CE** & II 2 DG c Tx°C IP66
- Optional external adjustment permits zero reset from outside the case
- Dry or liquid filled
- Silicone coil dampening provides vibration dampening and improves response time



Bimetallic Thermometers

Model A

Options

8mm Ø Stem

9.6mm Ø Stem

External Zero Adjustment (IP Rating IP65)

Shatterproof Glass Window

Acrylic Window

Silicone Filled (Max+300°C, inc. Acrylic Glass, not available on Vertical Model)

Dual Scale

Stainless Steel Tag

ATEX (IP66 and Shatterproof Glass Required)

Calibration Certificate

Temperature Ranges °C

0°C / +50°C	0°C / +60°C	0°C / +80°C	0°C / +100°C	0°C / +120°C
0°C / +150°C	0°C / +160°C	0°C / +200°C	0°C / +250°C	0°C / +300°C
0°C / +400°C	0°C / +500°C	+10°C / +150°C	+50°C / +300°C	+50°C / +45-°C
+100°C / +500°C	-10°C / +50°C	-10°C / +110°C	-20°C / +40°C	-20°C / +60°C
-20°C / +120°C	-20°C / +180°C	-25°C / +25°C	-30°C / +50°C	-30°C / +70°C
-40°C / +40°C	-40°C / +60°C	-40°C / +160°C	-50°C / +50°C	

Temperature Ranges °F

0°F / +100°F	0°F / +150°F	0°F / +200°F	0°F / +250°F	0°F / +300°F
0°F / +350°F	0°F / +500°F	+20°F / +120°F	+30°F / +130°F	+30°F / +240°F
+50°F / +300°F	+50°F / +400°F	+50°F / +550°F	+80°F / +180°F	+100°F / +800°F
+160°F / +360°F	+170°F / +270°F	+200°F / +400°F	+200°F / +700°F	+200°F / +1000°F
-40°F / +120°F	-40°F / +160°F	-20°F / +120°F	-80°F / +120°F	-10°F / +100°F